

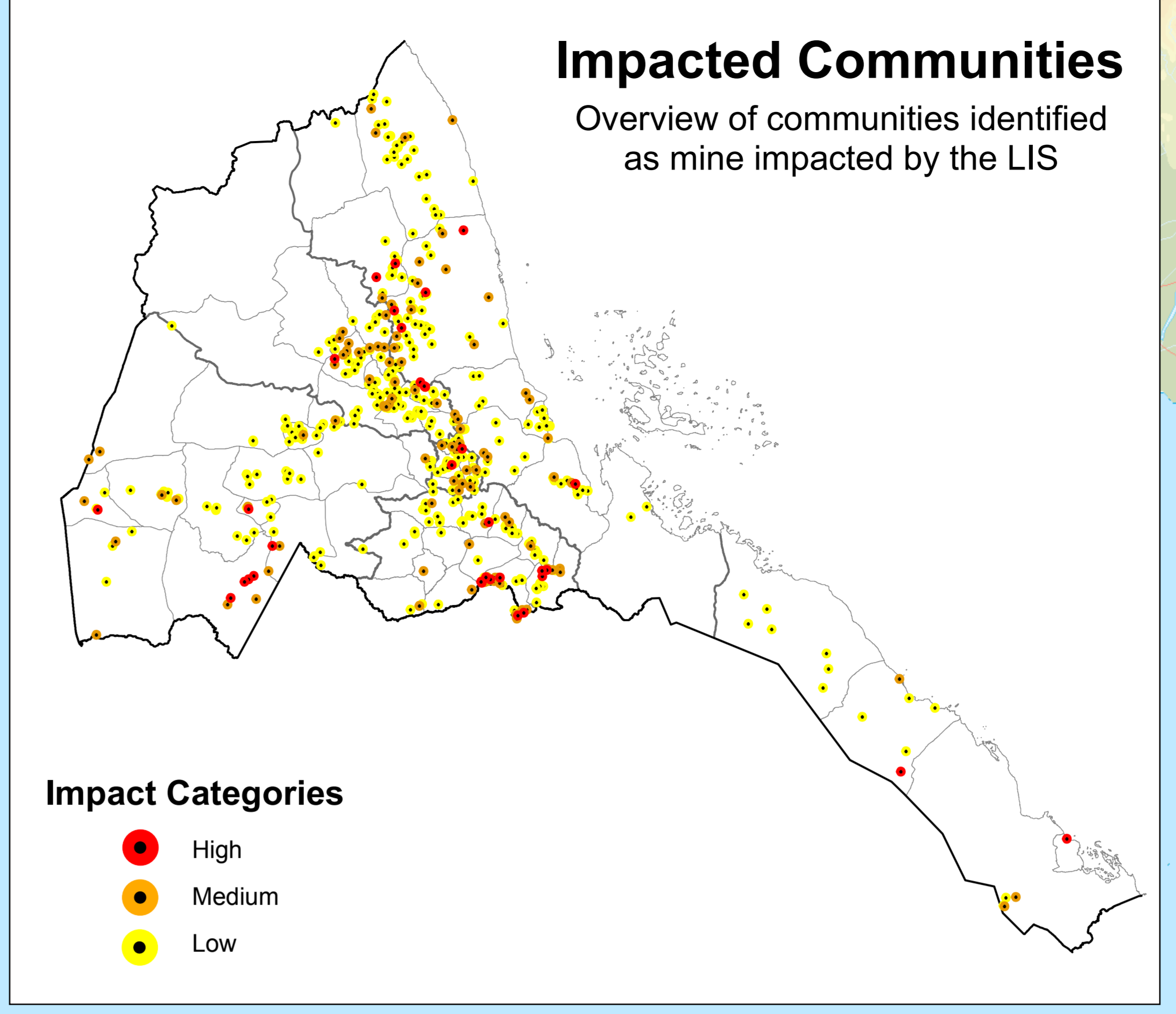
Eritrean Demining Authority  
 Ambasaria  
 Zip 197, Asmara  
 Eritrea  
 Tel: +291 1 127 261  
 Fax: +291 1 151 961 x2177

The boundaries and names depicted on this map do not imply official recognition by the EDA, UN or SAC.

Users should refer corrections to:  
 Survey Action Center  
 Washington DC, USA  
 Tel: +1 301 891 9192  
 sac@sac-na.org  
 www.sac-na.org

Projection: UTM Zone 37 North  
 Datum: WGS84  
 Date: February 2005  
 Reference: ERI\_Poster.mxd

Map Source: ADC, DEPHA, EEBC, VMAP



# ERITREA

## Landmine Impact Survey - 2004

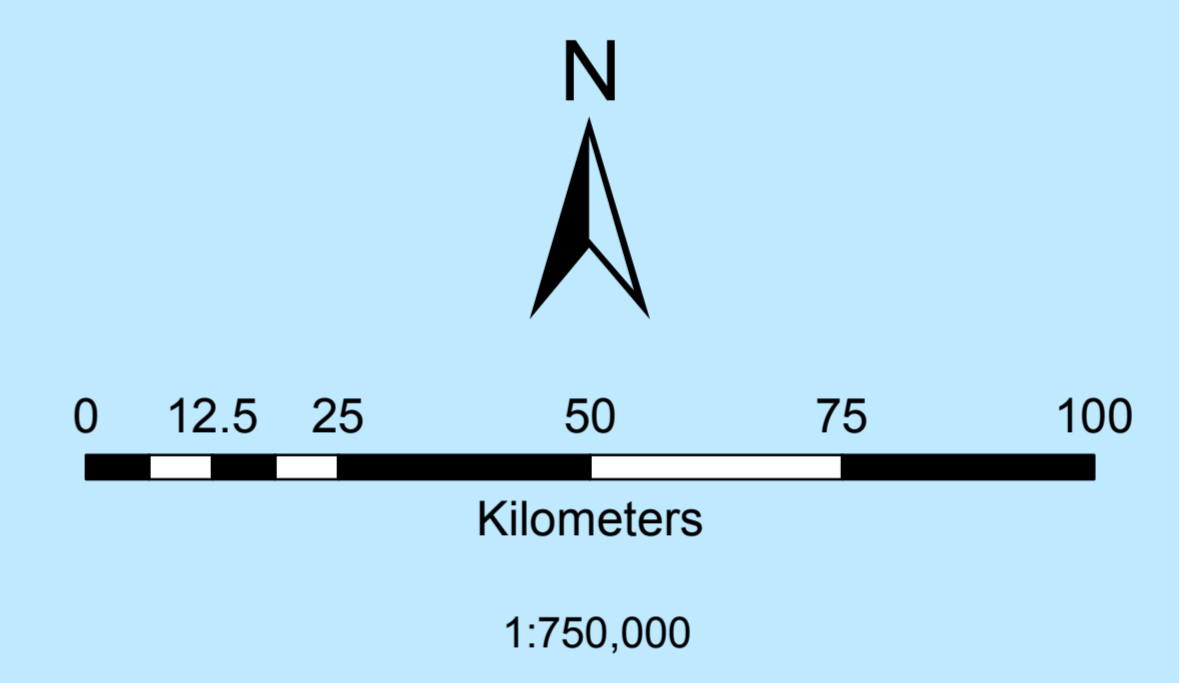
Funded by the European Community and the governments of Canada and Norway

Executed by the Eritrean Demining Authority (EDA), the Mine Action Capacity Building Project (MACBP) and the United Nations Development Programme (UNDP)

Implemented by the Eritrean Solidarity and Co-operation Association (ESCA)

With assistance and cooperation from Cranfield University, the Centre for Development and Environment Berne, the HALO Trust, the Survey Action Center and the UN Mine Action Coordination Center

Sudan



### Legend

- International (Yellow dashed line)
- Zoba (Green dashed line)
- Sub-Zoba (Blue dashed line)
- Main town (Black dot)
- Capital city (Star symbol)
- Town / village (Small black dot)
- Airport (Cross symbol)
- Highway (Red line)
- Main road (Orange line)
- Path or trail (Dotted line)
- Rail (Black line)
- River (Blue line)

### Elevation (m)

- Water (Blue)
- Below sea level (Dark green)
- 0 - 250 (Light green)
- 250 - 500 (Yellow-green)
- 500 - 750 (Yellow)
- 750 - 1,000 (Light orange)
- 1,000 - 1,500 (Orange)
- 1,500 - 2,000 (Dark orange)
- 2,000 - 2,500 (Brown)
- 2,500 - 3,000 (Dark brown)
- 3,000 - 4,000 (Red-brown)
- 4,000 - 5,000 (Dark red)

### Impact Categories

- High (Red dot)
- Medium (Orange dot)
- Low (Yellow dot)

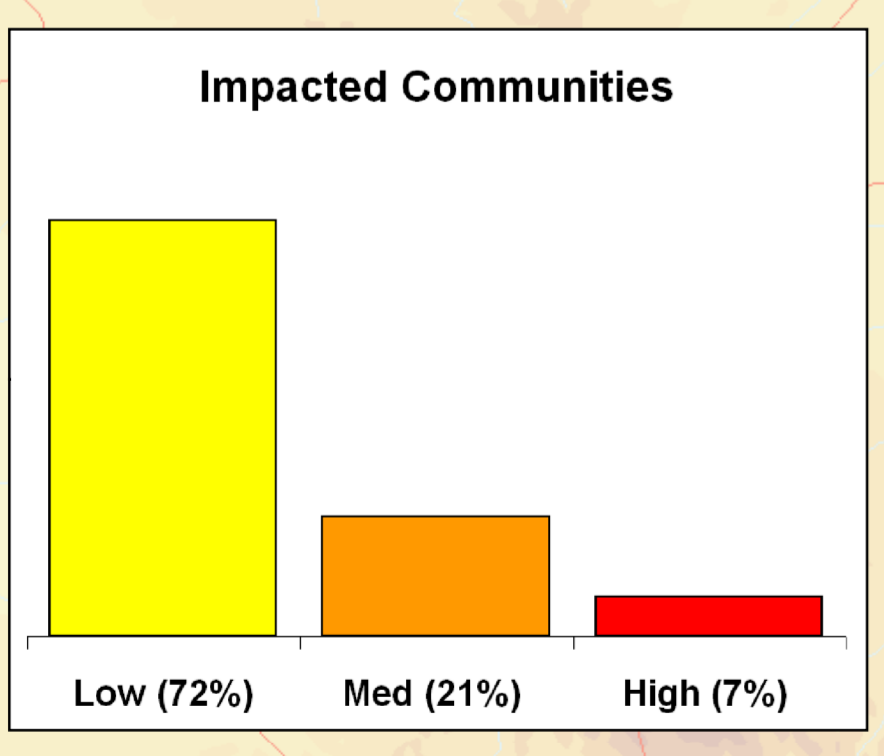
The spokes on each impacted community show the presence of mine action activities

- Mine Risk Education (Red spoke)
- Victim Assistance (Green spoke)
- Regent Victim (Blue spoke)
- Marking (Yellow spoke)
- Clearance (Purple spoke)

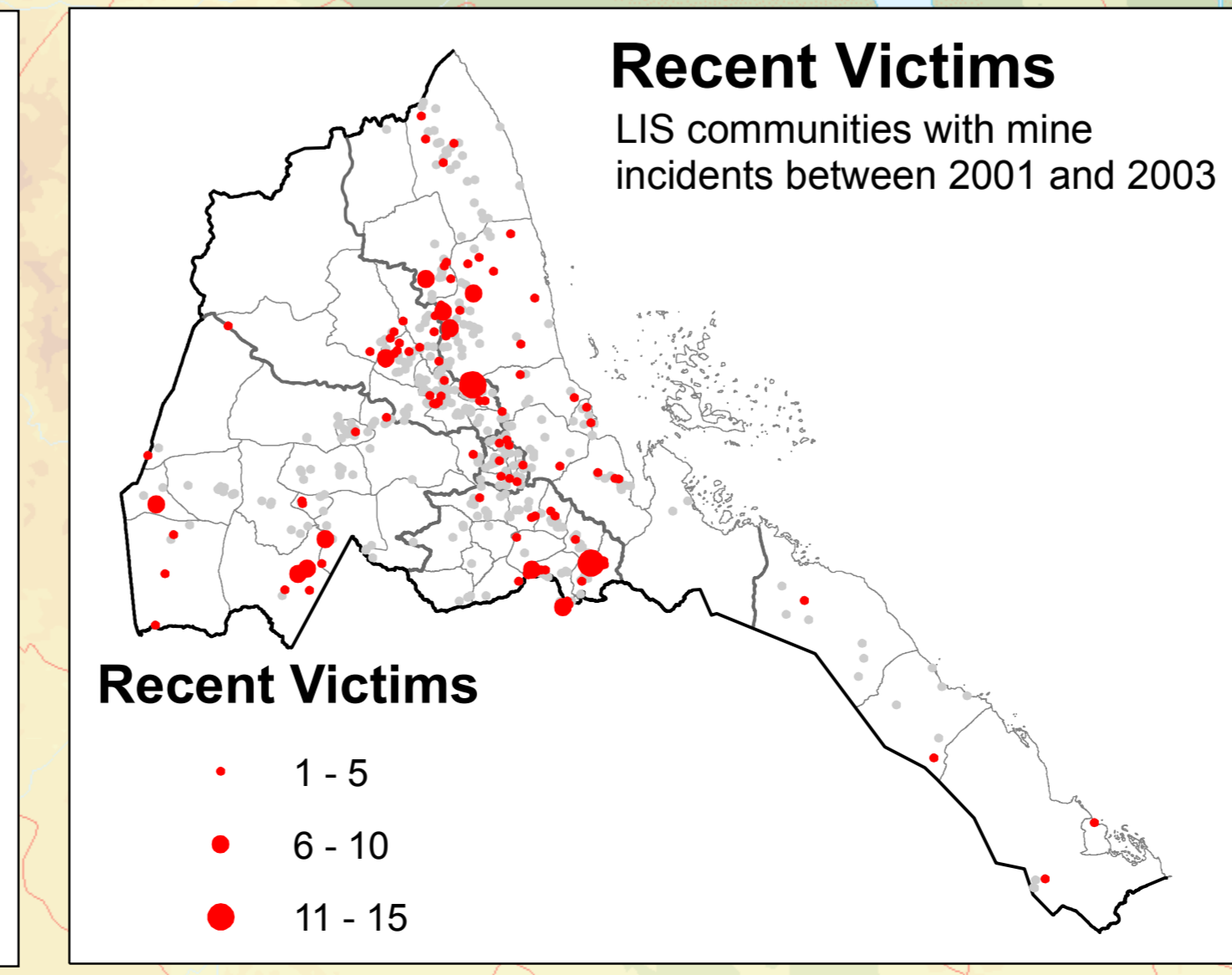
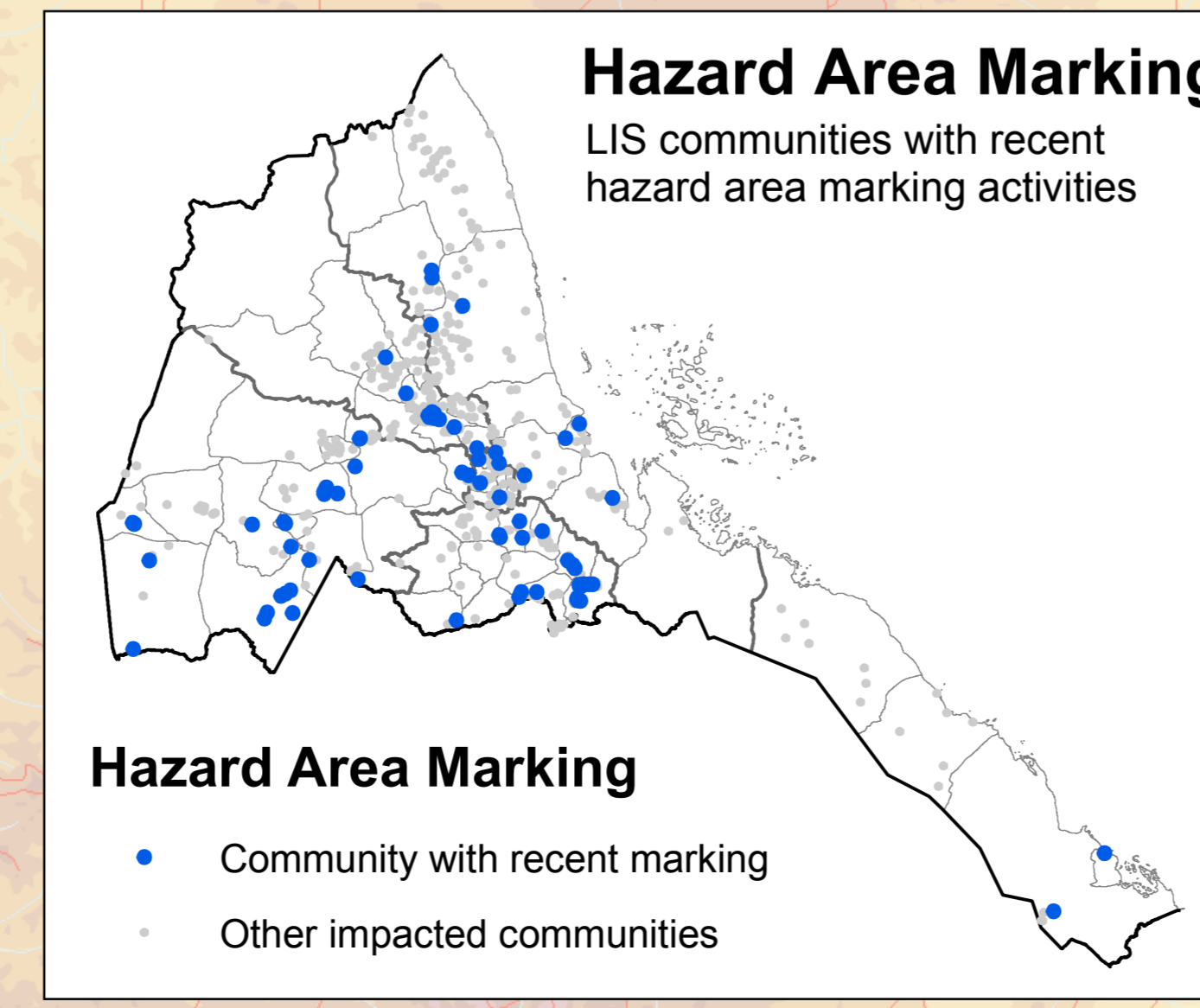
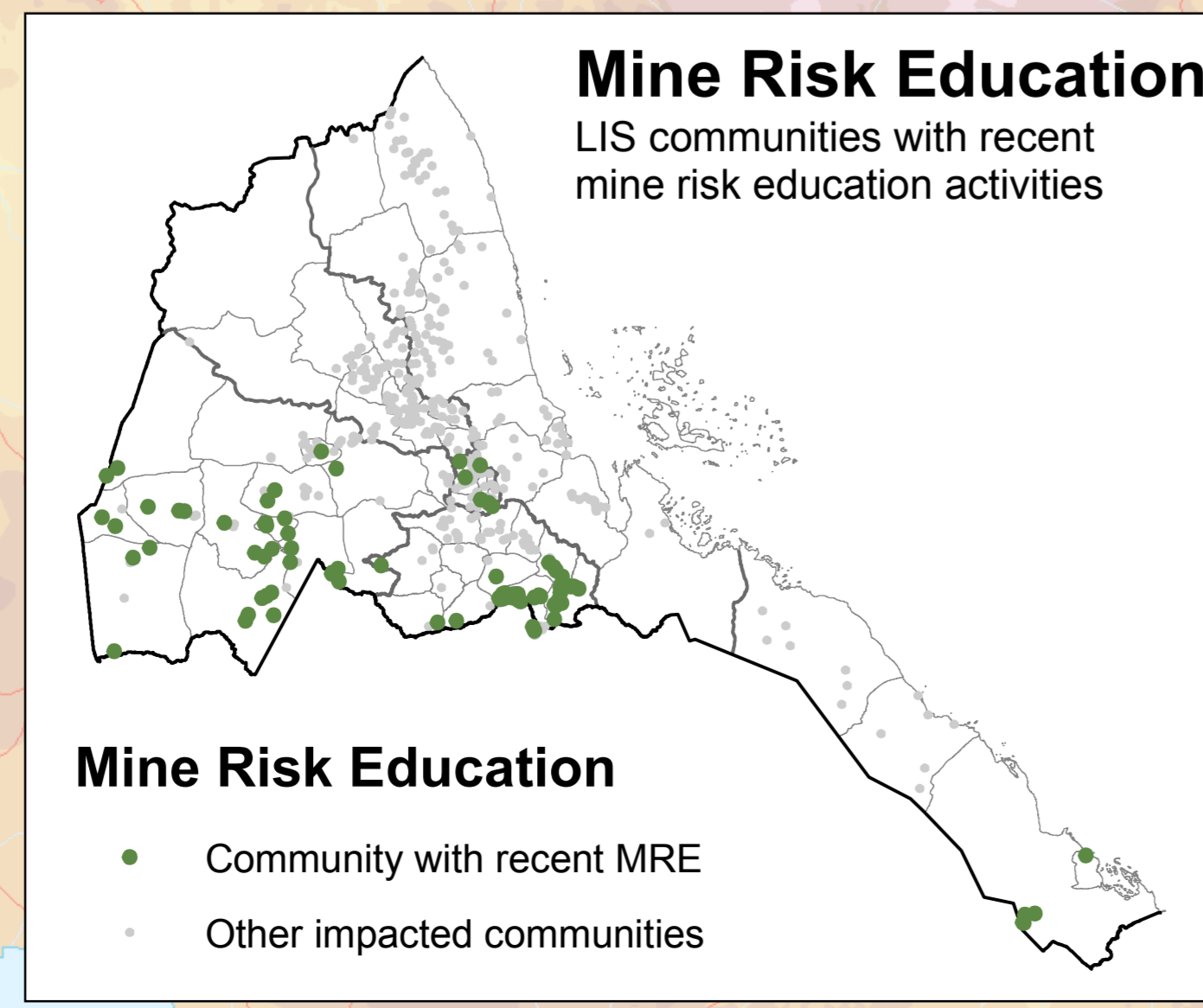
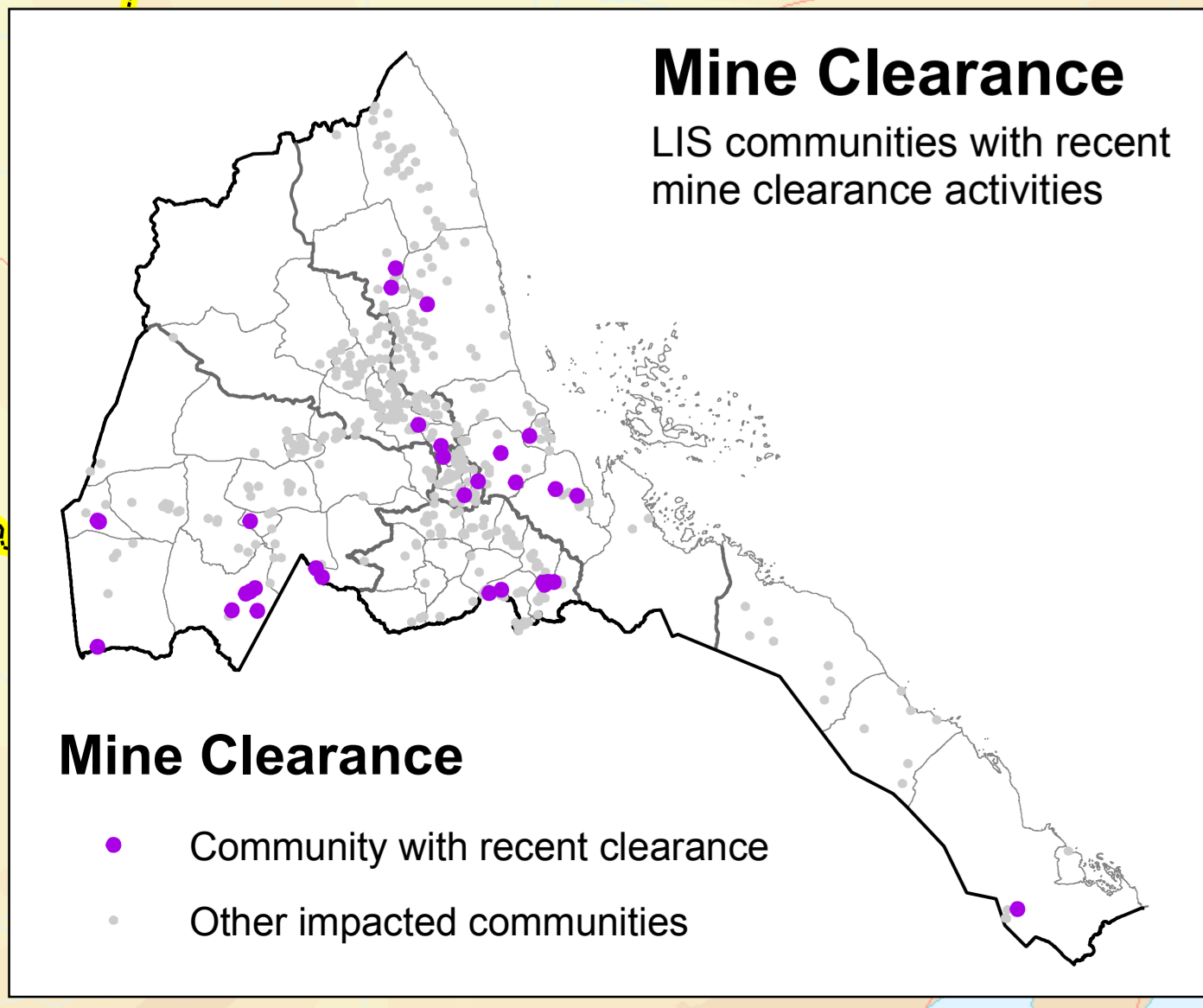
A white center denotes one or more recent victims

Ethiopia

Yemen



Zoba	Impacted Population		Impacted Communities				Suspected Hazard Areas (SHAs)		Recent Victims (2001 - 2003)	
	Number	Percent	Low	Med	High	Total	Number	Percent	Victims	Percent
Anseba	107,446	16%	86	21	4	111	211	23%	64	22%
Debub	91,661	14%	55	25	11	91	145	16%	87	29%
Debubawi Keih Bahri	9,924	2%	13	3	2	18	29	3%	9	3%
Gash Barka	173,560	26%	68	15	7	90	142	16%	59	20%
Maekel	93,271	14%	27	10	2	39	89	10%	13	4%
Semienawi Keih Bahri	179,255	27%	99	26	7	132	298	33%	63	21%
<b>Total</b>	<b>655,117</b>	<b>100%</b>	<b>348</b>	<b>100</b>	<b>33</b>	<b>481</b>	<b>914</b>	<b>100%</b>	<b>295</b>	<b>100%</b>



Djibouti