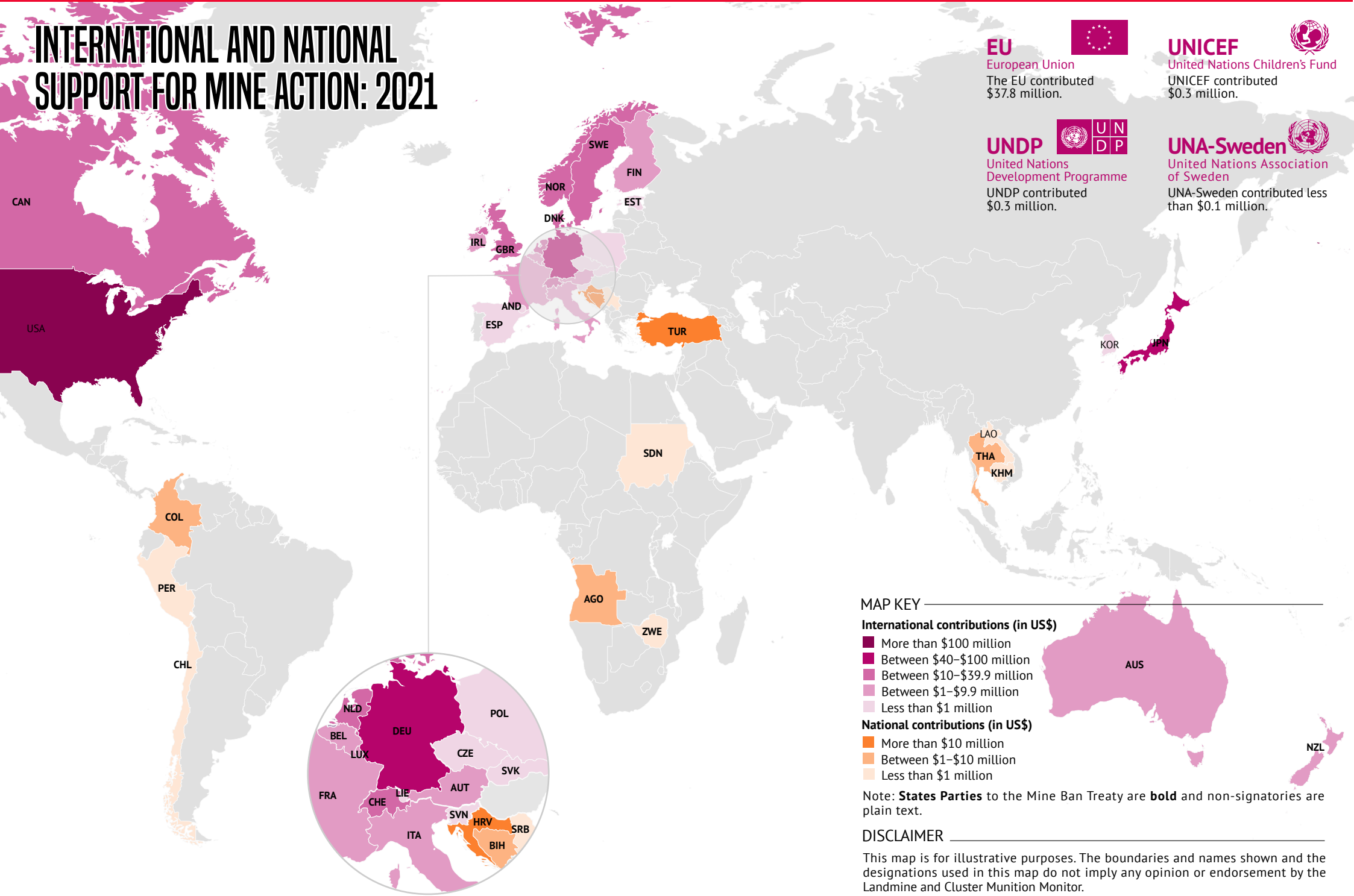


INTERNATIONAL AND NATIONAL SUPPORT FOR MINE ACTION: 2021



EU
European Union
The EU contributed \$37.8 million.

UNICEF
United Nations Children's Fund
UNICEF contributed \$0.3 million.

UNDP
United Nations Development Programme
UNDP contributed \$0.3 million.

UNA-Sweden
United Nations Association of Sweden
UNA-Sweden contributed less than \$0.1 million.

MAP KEY

International contributions (in US\$)

- More than \$100 million
- Between \$40-\$100 million
- Between \$10-\$39.9 million
- Between \$1-\$9.9 million
- Less than \$1 million

National contributions (in US\$)

- More than \$10 million
- Between \$1-\$10 million
- Less than \$1 million

Note: **States Parties** to the Mine Ban Treaty are **bold** and non-signatories are plain text.

DISCLAIMER

This map is for illustrative purposes. The boundaries and names shown and the designations used in this map do not imply any opinion or endorsement by the Landmine and Cluster Munition Monitor.